



OSCILLATING
PUMPS



OSCILLATING PUMPS

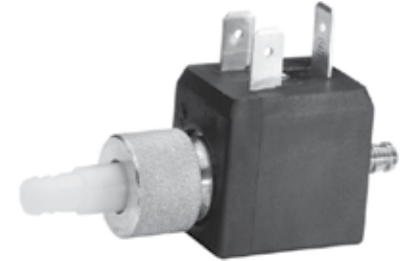
ITT Flojet oscillating pumps are designed for general consumer, commercial and industrial applications. All models are self-priming double insulated and built to draw low amps for cool operation and can run dry for extended periods of time without damage.



MODEL ET508 SERIES (HB)

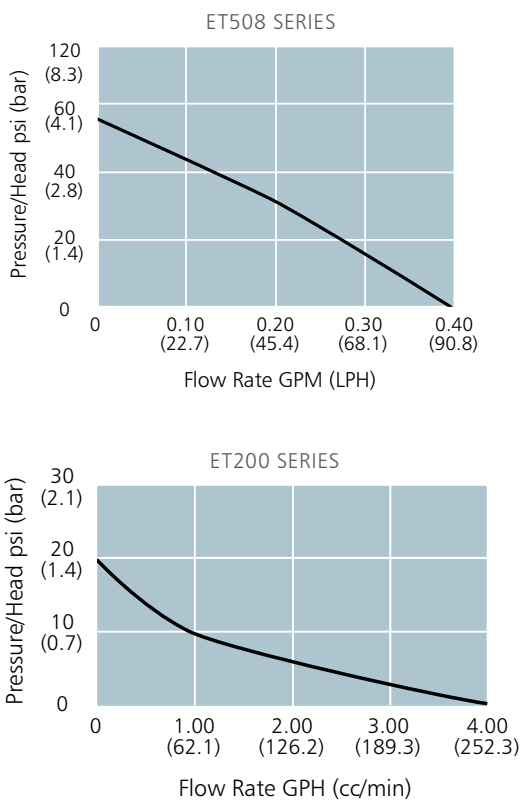


MODEL ET508 SERIES (FNPT)



MODEL ET200 SERIES

PERFORMANCE



SPECIFICATIONS

Type of Pump	ET508-HB	ET508-FNPT	ET200
Temperature	Max. 160° F/71°C	Max. 160° F/71°C	Max. 176° F/80°C
Open Flow Rate	.40 GPM/90 LPH	.40 GPM/90 LPH	3.8 GPH/240 cc/min.
Length	5.54" (140.6mm)	4.53" (115.0mm)	2.75" (70mm)
Width	2.25" (53.6mm)	2.25" (53.6mm)	.87" (22mm)
Height	2.11" (53.5mm)	2.11" (53.5mm)	1.55" (39.5mm)
Maximum Pressure	55 PSI/3.8 Bar	55 PSI/3.8 Bar	20 PSI/1.4 Bar
Self-Priming (up to)	6 (inHg)	6 (inHg)	1.3 (inHg)
Standard Voltage	115V/60Hz and 230V/50Hz, other voltages available.		
Power Consumption (nominal)	46 Watts	46 Watts	18.5 Watts
Insulation Class	F (155° C)	F (155° C)	H (180° C)
Elastomers	EPDM and Viton		
Piston and Spring	Stainless Steel for all models		
Filtering	4/1000 Mesh		
Approvals	U.L. and CSA Recognized, CE Certified*		

* Approvals vary within the Product Line. Contact a Flojet Representative for specific model listings, recognitions and certifications.

Includes internal diode (except ET200 which requires an external diode).

MODELS

MODEL #S	CE	UL	VOLTAGE	CHECK VALVE MTL.	PORT TYPE
ET508-221	YES	NO	115VAC	EPDM	1/4" (6.4mm) Hose Barb
ET508-223	YES	NO	115VAC	EPDM	1/8" (3.2mm) FNPT
ET508-224	YES	NO	115VAC	VITON	1/8" (3.2mm) FNPT
ET508-244	YES	NO	230VAC	VITON	1/8" (3.2mm) FNPT
ET200-021	YES	YES	115VAC	EPDM	.24" (6.1mm) HB X .20" (5.1mm) HB



SLIDING VANE
PUMPS

SUBMERSIBLE DIESEL SLIDING VANE PUMPS



SR060 SUBMERSIBLE DIESEL REFUELLING PUMP WITH INTELLIGENT CONTROL FOR INTERNATIONAL & US MARKETS

Flow rate: 13 gpm (60 lpm)

A revolutionary vehicle mounted pumping system to enable construction plant to be refueled with diesel fuel independently, from an adjacent drum, bowser or tank and into the vehicle fuel tank, safely and efficiently. Suitable for plant with tank sizes from 26.4 (100) to 158.5 gallons (600 liters).



FEATURES

- Faster refuelling – 16 gpm (60 lpm)
- Compact easy to install
- Suitable for “Short Radius” and “Zero Swing” machines
- Tolerance of small debris up to .04 in (1.0mm) diameter
- 2 Year Warranty (models fitted with Intelligent controller)
- Quick change for fast repair
- Low maintenance
- Fully sealed electrics, in conformance to IP68

INTELLIGENT CONTROL FEATURES

- Failsafe operation
- Will stop when the tank is full
- Will not start until the pump is immersed in the liquid
- Stops when the drum is empty

SPECIFICATIONS

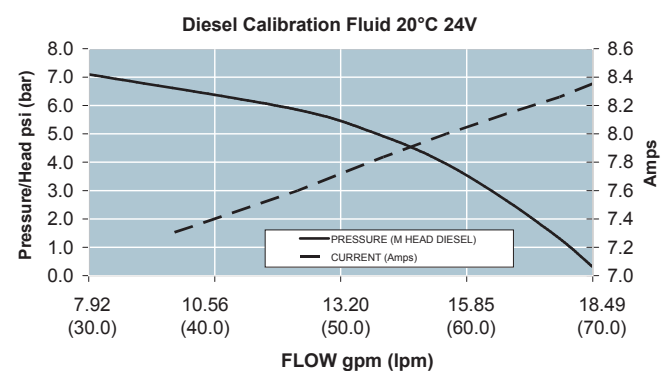
Duty Cycle	10 mins on 5 mins off
Performance	Nominal 15.85 GPM (60 LPM)
ATEX	Ex II2GEx nRfrb T4
Salt Mist	IEC 60068-2-11:1999: Test Ka
Cold bend (hose only)	BS EN ISO 4672:1999, Method B
Vibration random	MIL-PRF-28800F, Paragraph 4.5.5.1.1.1, Test (a)
Cold operational	LR Type Specification No. 1 (IEC 60068-2-1:1990: Tests Ab/Ad)
Dry Heat	LR Type Specification No. 1 (IEC 60068-2-2:1974: Tests Bb/Bd)
Vibration	Def-Stan 07-55, Part 2, Section 1/1, Test A2, Paragraph 4 (1) a (i), Level 2
Ingress protection (IPX8)	BS EN 60529:1992
Temperature cycling	LR Type Specification No. 1 Paragraph I4
Electromagnetic Compatibility	ISO 13766



GAS WARNING

No pump manufactured by ITT should be used for gasoline or any fluid with a flash point below 100° F (38° C)

PERFORMANCE



MODELS

MODEL #	CE	DESCRIPTION
SRA060-6115	Yes	15.9 (60 LPM) 24V DC 3m hose intell controller, float switch
SRA060-7115	Yes	15.9 (60 LPM) 24V DC 3.5m hose intell controller, float switch
SRA060-6114	Yes	15.9 (60 LPM) 24V DC 3.5m hose intell controller,
SRA060-6110	Yes	15.9 (60 LPM) 24V DC 3.5m no switch

DIESEL SLIDING VANE / OIL TRANSFER PUMPS



FUEL MASTER 40 & BY-PASS 40 | FOR INTERNATIONAL & US MARKETS

Flow rate: Nominal 9.3 gallons/min (35 Liters/min) at 1500rpm. Self-priming from dry up to 4.9ft (1.5m)



APPLICATIONS

- Designed for refueling large diesel powered vehicles [typical tank sizes 100 - 400 gallons (400 - 1500 liters)] from drums
- This pump can be used where high flow rates, heads and superior priming performance is required
- Suitable for mounting to the following equipment: excavators, cranes, road rollers (compactors), pavers, agricultural machines, generators, helicopters
- Suitable for diesel fuel, kerosene, paraffin, hydraulic oils, Oils up to 150 centi Stokes (750 Saybolt Universal) viscosity

FEATURES

BY-PASS 40

- Includes integral by-pass for use with a trigger nozzle

FUELMASTER 40

- Fully assembled diesel refueling kit
- Sits on a standard 40 gallon (205 liter) drum, or can be wall mounted
- Kit includes pump, suction hose, discharge hose, strainer, trigger nozzle, battery leads & clips, and carrying frame
- For rapid, efficient diesel fuel transfer
- Safe and tidy storage when not in use

SPECIFICATIONS

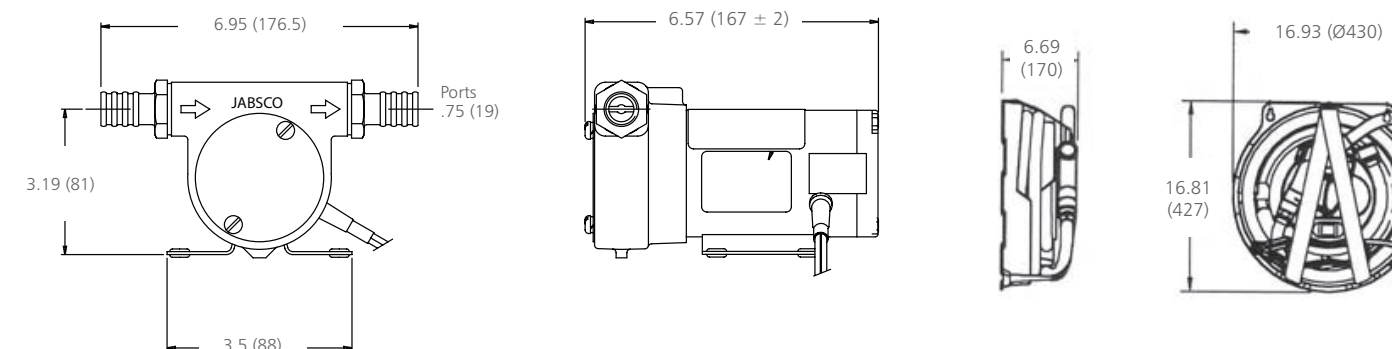
Body	Aluminium
Rotor	Vectra
Vanes	PTFE filled Ryton
Seal	Nitrile Lip Seal
Voltage	12 or 24 Vdc

MODELS

FUEL MASTER 40		
MODEL #S	CE	DESCRIPTIONS
50140-0000	Yes	10.6 GPM (40 LPM) 12V DC diesel refuelling pump kit (inc hoses and leads)
50140-0100	Yes	10.6 GPM (40 LPM) 24V DC diesel refuelling pump kit (inc hoses and leads)
BY-PASS 40		
MODEL #S	CE	DESCRIPTION
50130-1000	Yes	10.6 GPM (40 LPM) 12V DC pump hose ports
50130-1100	Yes	10.6 GPM (40 LPM) 12V DC pump hose ports

DIMENSIONAL DRAWING

UNLESS OTHERWISE STATED DIMENSIONS IN [] ARE IN MM.

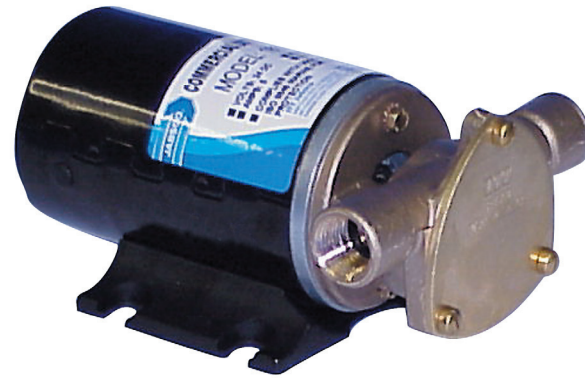


DIESEL SLIDING VANE / OIL TRANSFER PUMPS



ROTARY VANE PUMP | FOR INTERNATIONAL & US MARKETS

The ITT Jabsco reversible rotary vane pump is ideal for transferring diesel fuel. It is self-priming to about three feet and can pump against a discharge head up to twenty feet. With its integral on-off reversing switch, it is ideal for moving fuel between port and starboard fuel tanks. Meets USCG 183.410 & ISO8846 Marine (Ignition Protection).



SPECIFICATIONS

Body	Bronze
Rotor	Vectra
Vanes	Ryton
Seal	Lip Type, Nitrile
Motor	12V DC Permanent magnet Type, Intermittent Duty, Fully Enclosed, Stainless Steel Shaft
Ports	1/2" (12.7mm) NPT Internal Pipe Threads, 1" (25mm) External Hose Barb
Height	3-3/8" (86mm)
Length	8-5/8" (219mm)
Width	4-3/4" (121mm)
Weight	5-1/2 lbs (2.5 kg)

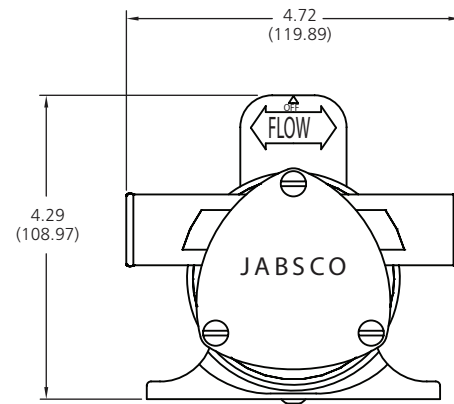
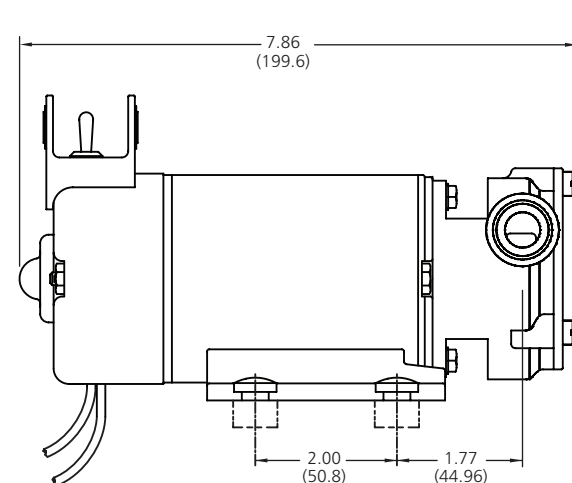
MODEL

MODEL #S	CE	DESCRIPTION
18680-0920	Yes	6.08 GPM (23 LPM) 12V DC pump 1/2" (12.7mm) NPT
18680-0940	Yes	6.08 GPM (23 LPM) 24V DC pump 1/2" (12.7mm) NPT
18680-1000	Yes	6.08 GPM (23 LPM) 12V DC pump 1/2" (12.7mm) NPT Reversible

Note: 18680-1000 is reversible, the others are not.

DIMENSIONAL DRAWING

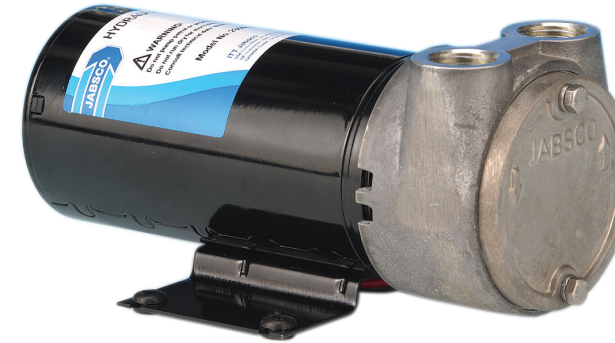
UNLESS OTHERWISE STATED DIMENSIONS IN [] ARE IN MM.



DIESEL SLIDING VANE / OIL TRANSFER PUMPS



HYDRAULIC OIL TRANSFER PUMP | FOR INTERNATIONAL & US MARKETS



APPLICATIONS

- General transfer duties
- Pumping of hydraulic systems on vehicles in construction and forestry industries

FEATURES

- Self priming up to 5.91 feet (1.8 meters)
- Maximum differential pressure 21.76 psi (1.5 bar)
- Maximum flow - 6.87 gpm (26 lpm) @ 7 psi (0.5 bar) differential pressure
- Suitable for hydraulic oil, etc up to 150 cSt
- Full range of installation accessories

SPECIFICATIONS

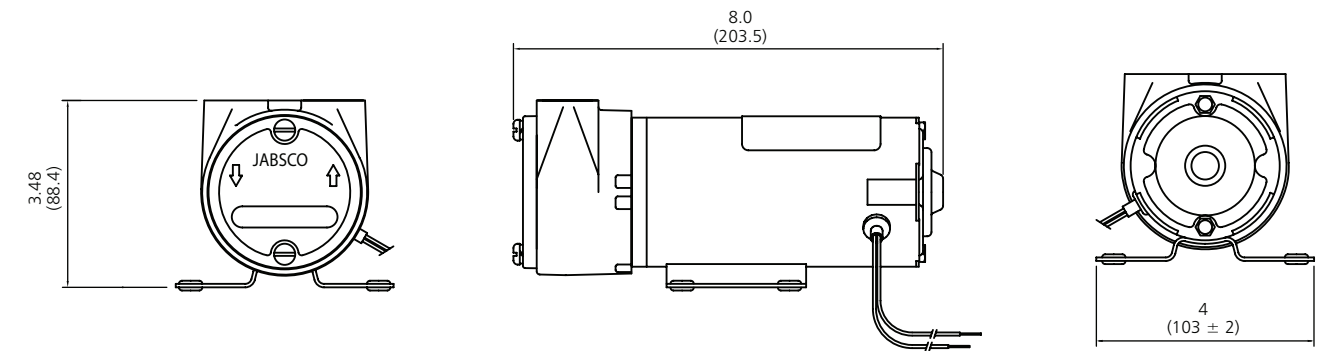
Body	Aluminium
Rotor	Sintered Iron
Vanes	PTFE Filled Ryton
Seal	Nitrile Lip Seal
Shaft	Stainless Steel
Port Type	1/2" (12.7mm) BSP Note: 3/4" (19mm) hose minimum recommended size
Voltage	12 or 24 Vdc
Motor	Permanent magnet, corrosion resistant IP44 protected
Temperature Range	-4 to +104°F (-20 to +40 °C)
Duty	30 mins @ +68°F (20°C) 7.3 psi (0.5 bar) differential pressure 15 mins @ +68°F (20°C) 14.5 psi (1.0 bar) differential pressure

MODEL

MODEL #S	CE	DESCRIPTION
23590-2010	Yes	6.86 GPM (26 LPM) 12V DC pump
23590-2110	Yes	6.86 GPM (26 LPM) 24V DC pump

DIMENSIONAL DRAWING

UNLESS OTHERWISE STATED DIMENSIONS IN [] ARE IN MM.



DIESEL SLIDING VANE / OIL TRANSFER PUMPS



35L DIESEL REFUELLING PUMP | FOR INTERNATIONAL & US MARKETS

Flow rate: 9 gallons/min (35 Liters/min). Self-priming from dry up to 2.4m (7.8ft)



APPLICATIONS

- Designed for refuelling small sizes diesel powered vehicles [typical tank sizes up to 50 gallons (200 liters)] from drums
- Suitable for mounting to the following equipment: excavators, cranes, road rollers (compactors), pavers, agricultural machines, generators, helicopters
- Suitable for diesel fuel, kerosene, paraffin, hydraulic oils, oils up to 150 centi Stokes (750 Saybolt Universal) viscosity
- 12 volt connection

FEATURES

- High head capability - 19 feet (6 meters)
- Self priming up to 9 feet (2.8 meters)
- Vibration tested
- IP55 protected motor
- Full range of installation accessories
- Customized kits for OEM customers
- ISO8846 Marine (Ignition Protected)

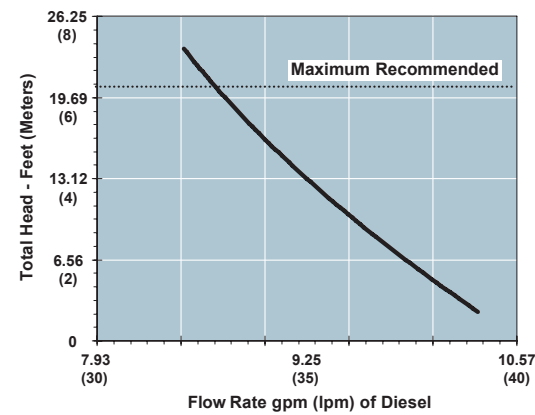
SPECIFICATIONS

Body	Aluminium
Rotor	Vectra
Vanes	PTFE Filled Ryton
Seal	Nitrile Lip Seal
Shaft	Steel
Port Type	1/2" BSP or 3/4" (19mm) hose adaptors
Voltage	12 or 24 Vdc
Motor	Permanent magnet, corrosion resistant IP55 protected
Temperature Range	-22 to +104 °F (-30 to +40 °C)
Duty	25 mins @ + 104°F (40°C)

MODELS

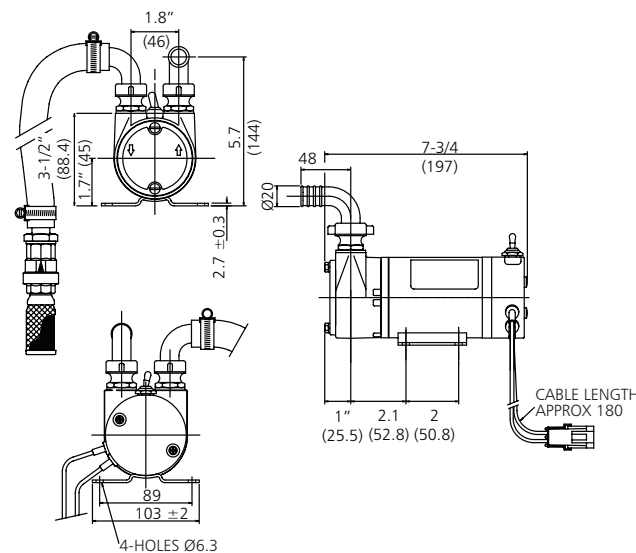
MODEL #S	CE	DESCRIPTION
23870-2200	Yes	9.2 GPM (35 LPM) 12V DC 1/2" (12.7 mm) BSP ports, switch and fuse
23870-2300	Yes	9.2 GPM (35 LPM) 24V DC 1/2" (12.7 mm) BSP ports, switch and fuse
23870-1200	Yes	9.2 GPM (35 LPM) 12V DC 3/4" (19 mm) hose ports, switch and fuse
23870-1300	Yes	9.2 GPM (35 LPM) 24V DC 3/4" (19 mm) hose ports, switch and fuse

PERFORMANCE



DIMENSIONAL DRAWING

UNLESS OTHERWISE STATED DIMENSIONS IN [] ARE IN MM.



DIESEL SLIDING VANE / OIL TRANSFER PUMPS



50L DIESEL REFUELLING PUMP | FOR INTERNATIONAL & US MARKETS

Flow rate: 13 gallons/min (50 liters/min) Self-priming from dry up to 9.6ft (3.0m)



APPLICATIONS

- Designed for refuelling small sizes diesel powered vehicles [typical tank sizes up to 130 gallons (500 liters)] from drums
- Suitable for mounting to the following equipment: excavators, cranes, road rollers (compactors), pavers, agricultural machines, generators, helicopters
- Suitable for diesel fuel, kerosene, paraffin, hydraulic oils, oils up to 150 centi stokes (750 saybolt universal) viscosity
- 12 volt connection

FEATURES

- High head capability - 32 feet (10 meters)
- Self priming up to 9.6 feet (3 meters)
- Continuously rated
- Vibration tested
- IP55 protected motor
- 24V version with thermal cut-out protection
- Full range of installation accessories
- Customized kits for OEM customers
- ISO8846 marine (Ignition protection)
- Auto shut off available

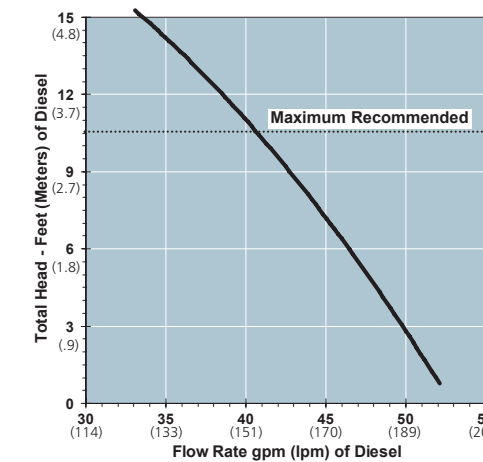
SPECIFICATIONS

Body	Cast Iron
Rotor	Sintered Iron
Vanes	Sintered Bronze
Seal	Nitrile Lip Seal
Shaft	Steel
Port Type	3/4" BSP or 25mm (1") hose adaptors
Voltage	12 or 24 Vdc
Motor	Permanent magnet, corrosion resistant IP55 protected
Temperature Range	-22 to +104 °F (-30 to +40 °C)
Duty	Continuously rated up to 10 feet (3 metres), total head of diesel fuel at 104°F (40°C)

MODELS

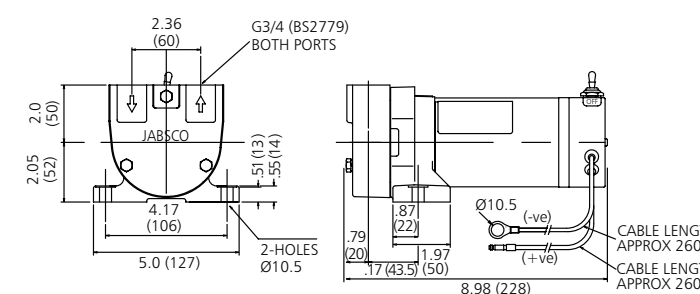
MODEL #S	CE	DESCRIPTION
VR050-2022	Yes	13.2 gpm (50 lpm) 12V DC 3/4" BSP ports, switch & fuse
VR050-2120	Yes	13.2 gpm (50 lpm) 24V DC 3/4" BSP ports
VR050-2122	Yes	13.2 gpm (50 lpm) 24V DC 3/4" BSP ports, switch and fuse
VR050-1120	Yes	13.2 gpm (50 lpm) 24V DC 1" (25mm) hose ports
VR050-1022	Yes	13.2 gpm (50 lpm) 12V DC 1" (25mm) hose ports, switch & fuse
VR050-1122	Yes	13.2 gpm (50 lpm) 24V DC 1" (25mm) hose ports, switch & fuse
VR050-1123	Yes	13.2 gpm (50 lpm) 24V DC 1" (25mm) hose ports, auto shut off
VR050-B013	Yes	13.2 gpm (50 lpm) 24V DC 1" (25mm) hose ports, switch & fuse, bypass

PERFORMANCE



DIMENSIONAL DRAWING

UNLESS OTHERWISE STATED DIMENSIONS IN [] ARE IN MM.

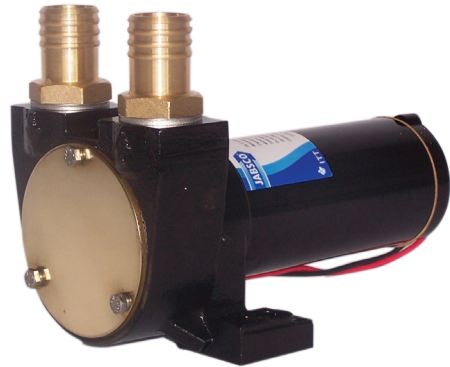


DIESEL SLIDING VANE / OIL TRANSFER PUMPS



100L DIESEL REFUELLING PUMP | FOR INTERNATIONAL & US MARKETS

Flow rate: 28 gallons/min (105 liters/min) Self-priming from dry up to 7.8ft (2.4m)



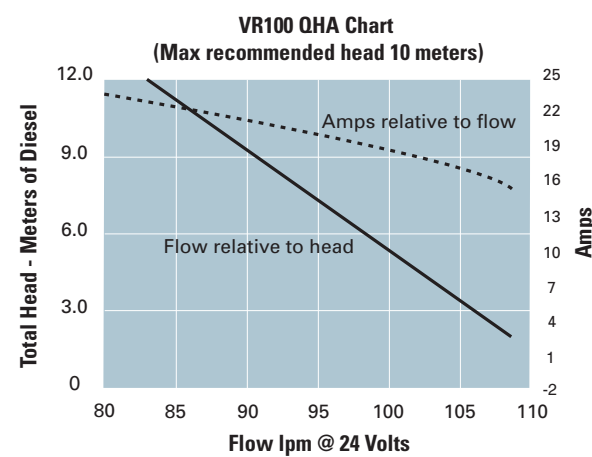
APPLICATIONS

- Designed for refuelling large diesel powered vehicles [typical tank sizes 100 - 400 gallons (400 - 1500 liters)] from drums
- This pump can be used where high flow rates, heads and superior priming performance is required
- Suitable for mounting to the following equipment: excavators, cranes, road rollers (compactors), pavers, agricultural machines, generators, helicopters
- Suitable for diesel fuel, kerosene, paraffin, hydraulic oils, oils up to 150 centi stokes (750 saybolt universal) viscosity

MODELS

MODEL #S	CE	DESCRIPTION
VR100-2120	Yes	26.4 GPM (100 LPM) 24V DC 1" (25.4 mm) BSP ports
VR100-2120V	Yes	26.4 GPM (100 LPM) 24V DC 1" (25.4 mm) BSP ports for Bio-Diesel
VR100-1120	Yes	26.4 GPM (100 LPM) 24V DC 1/4" (32mm) hose ports,
VR100-1122	Yes	26.4 GPM (100 LPM) 24V DC 1/4" (32mm) hose ports, switch & circuit breaker
VR100-1123	Yes	26.4 GPM (100 LPM) 24V DC 1/4" (32mm) hose ports, auto shut off

PERFORMANCE



FEATURES

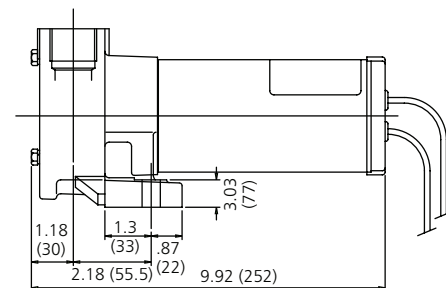
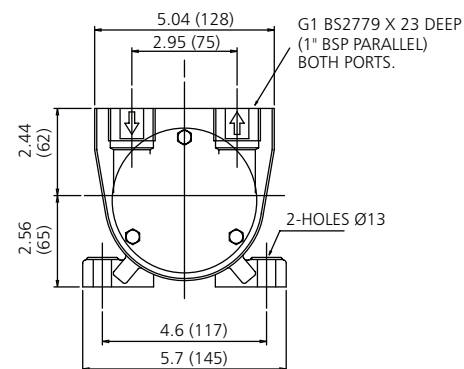
- Faster refuelling - 105 liters/minute (28GPM)
- High head capability - 10 metres (33 feet)
- Self priming up to 4 metres (12 feet)
- 45 min duty
- Thermal overload protected
- Vibration tested
- IP55 protected motor
- Full range of installation accessories
- Customized kits for OEM customers

SPECIFICATIONS

Temperature Range	-22°F to +122°F (-30°C to +50°C)
Pump Body	Cast Iron
Rotor	Sintered Iron
Vanes	Sintered Bronze
Shaft	Stainless Steel
Seal	Nitrile Lip Seal (Viton - 2120V)
Ports	Vertical 1" BSP or 1/4" (32mm) hose adaptors
Motor	24v DC permanent magnet, thermal overload & IP55 protected
Duty	20 mins rated at 14.1 ft (4.3 m), total head of diesel fuel at 68°F (20°C)

DIMENSIONAL DRAWING

UNLESS OTHERWISE STATED DIMENSIONS IN [] ARE IN MM.



SPECIALTY PRODUCTS